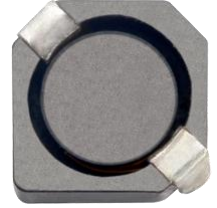


MAGNETIC SHIELDED POWER CHIP INDUCTOR

屏蔽式功率电感



PSPD Series



深圳高路瑞电子有限公司

Shenzhen Glory Electronics Co., Ltd.

Tel: 0755-2342 5572

FAX: 158 8976 3756

Website: www.gloryelectr.com

E-mail: glory@gloryelectr.com

Magnetic Shielded Power Chip Inductor-PSPD Series

屏蔽式功率电感-PSPD 系列



INTRODUCTION AND CHARACTERISTICS 产品介绍及特性

INTRODUCTION

◆ These revolutionary, highly reliable wire wound power chip inductors for automatic mounting have been developed in response to the trend toward high density in electronic equipment. The basic function of wire wound chip inductors is filtering, oscillation, delay, trap, etc. Its magnetic shielded type is suitable for high-density mounting and flat bottom surface allows for reliable mounting onto the board.

产品介绍

◆ 为了适应电子设备渐趋高密度的集成方式，我们开发了高可靠性的绕线功率电感。绕线电感基本作用是滤波、振荡、延迟、陷波等。良好的焊接性和磁屏蔽特性使其适合高密度表面安装。

CHARACTERISTICS

- ◆ Various high power inductors are superior to be high saturation
- ◆ Excellent solderability and high heat resistance for reflow soldering or wave soldering
- ◆ Various high power surface mountable type inductors are superior to high saturation
- ◆ No cross coupling due to magnetic shield

特性

- ◆ 大功率，高饱和电流，低阻抗
- ◆ 良好的焊接性，适合于回流焊或波峰焊
- ◆ 多种尺寸适合表面高密度贴装
- ◆ 良好的磁屏蔽，无交叉耦合

APPLICATIONS

- ◆ LCD television
- ◆ Power supply choke for small electrical equipments such as VTR, LCD display, Notebook, communication equipment, and so on

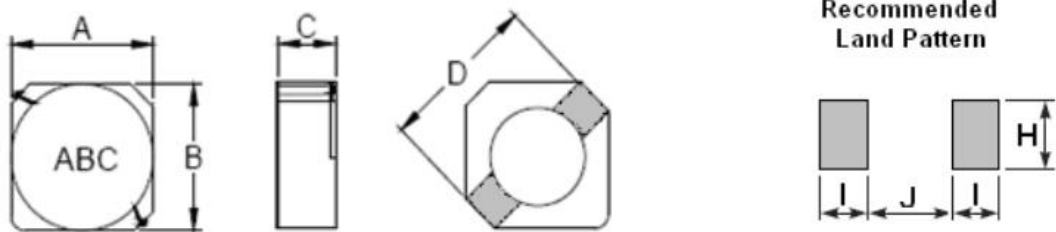
应用产品

- ◆ LCD 电视
- ◆ 录像机、液晶显示器、笔记本电脑、通讯、设备、办公自动化等电子设备的电源扼流

PRODUCT IDENTIFICATION 产品型号

PSPD 2D11 F 2R2 N T
 ① ② ③ ④ ⑤ ⑥

①Product Series Code 产品系列码	PSPD	Magnetic Shielded Power Chip Inductor-D Type Base 屏蔽式功率电感-D 型结构
②External Dimensions 外形尺寸	--	2D11~3D16
③Material Code 材质代号	F	材质代号
④Inductance Value Code 感量值	2R2	2.2uH
	330	33uH
⑤Inductance Tolerance 电感值公差	M	±20%
	N	±30%
⑥Packing 包装形式	T	Tape and Reel 编带

SHAPE AND DIMENSIONS 外观尺寸
RECOMMENDED LAND PATTERN 推荐的焊盘尺寸


Unit:mm

TYPE	A max.	B max.	C max.	D typ.	I typ.	J typ.	H typ.
PSPD2D11	3.3	3.3	1.3	4.4	1.3	1.7	1.3
PSPD2D14	3.3	3.3	1.6	4.4	1.3	1.7	1.3
PSPD2D18	3.3	3.3	2.1	4.4	1.3	1.7	1.3
PSPD3D11	4.2	4.2	1.3	5.5	1.4	2.4	1.5
PSPD3D14	4.2	4.2	1.6	5.5	1.4	2.4	1.5
PSPD3D16	4.2	4.2	1.8	5.5	1.4	2.4	1.5

**SPECIFICATIONS 规格特性****PSPD 2D11 TYPE**

Part Number 型号	Inductance 电感量 L	L Test Condition L 测试频率	DC Resistance 直流电阻 RDC	Rated Current 额定电流 Ir
Units 单位	uH	KHz/V	Ω	mA
PSPD2D11F1R2NT	1.2	100/0.3	0.068	900
PSPD2D11F2R2NT	2.2	100/0.3	0.098	780
PSPD2D11F3R3NT	3.3	100/0.3	0.123	600
PSPD2D11F4R7NT	4.7	100/0.3	0.170	500
PSPD2D11F6R8NT	6.8	100/0.3	0.260	440
PSPD2D11F100MT	10	1/0.3	0.400	350

PSPD 2D14 TYPE

Part Number 型号	Inductance 电感量 L	L Test Condition L 测试频率	DC Resistance 直流电阻 RDC	Rated Current 额定电流 Ir
Units 单位	uH	KHz/V	Ω	mA
PSPD2D14F1R5NT	1.5	100/0.3	63	1800
PSPD2D14F1R8NT	1.8	100/0.3	75	1650
PSPD2D14F2R2NT	2.2	100/0.3	94	1500
PSPD2D14F2R7NT	2.7	100/0.3	106	1350
PSPD2D14F3R3NT	3.3	100/0.3	125	1200
PSPD2D14F3R9NT	3.9	100/0.3	138	1100
PSPD2D14F4R7NT	4.7	100/0.3	169	1000
PSPD2D14F5R6NT	5.6	100/0.3	188	950
PSPD2D14F6R8NT	6.8	100/0.3	213	850
PSPD2D14F8R2NT	8.2	100/0.3	281	800
PSPD2D14F100MT	10	1/0.3	294	700
PSPD2D14F120MT	12	1/0.3	394	620

PSPD 2D18 TYPE

Part Number 型号	Inductance 电感量 L	L Test Condition L 测试频率	DC Resistance 直流电阻 RDC	Rated Current 额定电流 Ir
Units 单位	uH	KHz/V	Ω	mA
PSPD2D18F2R2NT	2.2	100/0.3	41	850
PSPD2D18F3R3NT	3.3	100/0.3	54	750
PSPD2D18F4R7NT	4.7	100/0.3	78	630



PSPD2D18F6R8NT	6.8	100/0.3	106	520
PSPD2D18F100MT	10	1/0.3	180	430
PSPD2D18F150MT	15	1/0.3	220	350
PSPD2D18F220MT	22	1/0.3	320	300
PSPD2D18F330MT	33	1/0.3	460	240
PSPD2D18F470MT	47	1/0.3	660	200

SPECIFICATIONS 规格特性**PSPD 3D11 TYPE**

Part Number 型号	Inductance 电感量 L	L Test Condition L 测试频率	DC Resistance 直流电阻 RDC	Rated Current 额定电流 Ir
Units 单位	uH	KHz/V	Ω	mA
PSPD3D11F2R2NT	2.7	100/0.3	78	500
PSPD3D11F3R3NT	3.3	100/0.3	99	450
PSPD3D11F4R7NT	4.7	100/0.3	123	400
PSPD3D11F6R8NT	6.8	100/0.3	180	340
PSPD3D11F8R2NT	8.2	1/0.3	204	320
PSPD3D11F100MT	10	1/0.3	240	280
PSPD3D11F120MT	12	1/0.3	276	250
PSPD3D11F150MT	15	1/0.3	372	230
PSPD3D11F180MT	18	1/0.3	468	210
PSPD3D11F270MT	27	1/0.3	726	170
PSPD3D11F330MT	33	1/0.3	822	150
PSPD3D11F390MT	39	1/0.3	942	140

PSPD 3D14 TYPE

Part Number 型号	Inductance 电感量 L	L Test Condition L 测试频率	DC Resistance 直流电阻 RDC	Rated Current 额定电流 Ir
Units 单位	uH	KHz/V	Ω	mA
PSPD3D14F2R2NT	1.5	100/0.3	55	1850
PSPD3D14F1R7NT	1.7	100/0.3	63	1850
PSPD3D14F2R2NT	2.2	100/0.3	69	1600
PSPD3D14F2R7NT	2.7	100/0.3	88	1450
PSPD3D14F3R3NT	3.3	100/0.3	100	1350
PSPD3D14F3R9NT	3.9	100/0.3	135	1150
PSPD3D14F4R7NT	4.7	100/0.3	150	1100
PSPD3D14F6R8NT	6.8	100/0.3	190	1000



PSPD3D14F8R2NT	8.2	100/0.3	238	820
PSPD3D14F100MT	10	1/0.3	262	750
PSPD3D14F120MT	12	1/0.3	350	670
PSPD3D14F150MT	15	1/0.3	488	600
PSPD3D14F220MT	22	1/0.3	575	520

SPECIFICATIONS 规格特性**PSPD 3D16 TYPE**

Part Number 型号	Inductance 电感量 L	L Test Condition L 测试频率	DC Resistance 直流电阻 RDC	Rated Current 额定电流 Ir
Units 单位	uH	KHz/V	Ω	mA
PSPD3D16F1R5NT	1.5	100/0.3	52	1550
PSPD3D16F2R2NT	2.2	100/0.3	72	1200
PSPD3D16F3R3NT	3.3	100/0.3	85	1100
PSPD3D16F4R7NT	4.7	100/0.3	105	900
PSPD3D16F6R8NT	6.8	100/0.3	170	730
PSPD3D16F8R2NT	8.2	100/0.3	190	650
PSPD3D16F100MT	10	1/0.3	210	550
PSPD3D16F150MT	15	1/0.3	295	450
PSPD3D16F220MT	22	1/0.3	430	400
PSPD3D16F330MT	33	1/0.3	660	320

※1. All test data is referenced to 20°C ambient;

※2. The maximum rated current is a DC current which causes initial inductance to decrease by 35% or temperature to rise by 40°C, which is smaller(at ambient reference temperature: 20°C